

ABSOLUTE AUCTION

SATURDAY, MAY 9, 2026, 10:30 AM
REAL ESTATE SELLS AT 11:00 AM



REAL ESTATE

Property outline is an estimation and not survey accurate



24 ACRES

Home & Buildings
Mower, Auto,
Household

17102 STATE HIGHWAY 285,
COCHRANTON, PA 16314

**LIVE ONSITE WITH ONLINE BIDDING
AVAILABLE ON REAL ESTATE**

AUCTION HIGHLIGHTS

- Auction #1: Modern Ranch Home With Garage On 1.4 Acres
- Auction #2: 23.6 Acres With Two Buildings
- Crawford Co., Greenwood Twp.

Also Selling Description:

- John Deere Mower
- 1977 Mercedes
- Household



Scan for auction
details, including
directions.

*Absolute Auction.
All sells to the
highest bidders
on location.*

www.kikoauctions.com | 800.533.5456

Information is believed to be
accurate but not guaranteed.
KIKO Auctioneers



MLS



REAL ESTATE

Custom built in 1999. Ranch home features modern open concept kitchen and dining room with oak cabinets, appliances, pantry cupboard, vinyl floors, living room with picture window, raised ceiling, master bedroom with walk-in closet and full bathroom with walk-in shower and access to main-level laundry room with raised front-load washer and dryer. Two more bedrooms and full bath. Fully enclosed/finished side porch/sunroom with seven double-bay windows, extra wide 36-inch doors throughout. Full basement with 11-course block, walkout with 12 X 24 carport out the back. House has vinyl windows and siding, FA propane heat and AC. Shingle roof replaced two years ago. 24 X 24 detached garage with concrete and auto overhead door. Blacktop driveway, extra wide front sidewalk and front steps, well and septic. Two pole buildings below the house. One is 40 X 75 metal pole building/ shop, enclosed with concrete floor and electric, and two open full-length lean-to bays. 40 X 80 three-sided pole building with metal roof, four 20' bays, two with concrete. Buildings have separate access easement off Rt. 285.

PARCEL #1

Home and garage mentioned above with 1.4 acres.

PARCEL #2

Two pole buildings mentioned above with 23 acres. Set up nice for commercial use.

NOTE

Very clean, well-maintained home. Real estate offered separate and together and will sell which way it brings the most. Sold in multi par auction.

TERMS ON REAL ESTATE

10% down auction day, balance due at closing. A 10% buyer's premium will be added to the highest bid to establish the purchase price. Any desired inspections must be made prior to bidding. All information contained herein was derived from sources believed to be correct. Information is believed to be accurate but not guaranteed. Property to be offered as a Multi Par auction and sold whichever way it brings the most.

MERCEDES, JD MOWER, MISC

1977 Mercedes 450 SL V8, fuel inj., auto, very clean, 86K miles; 1984 Honda Big Red three-wheeler; John Deere X500 lawn tractor 24 HP, 48 in deck, 548 hrs; 3 pt 6' blade; 6 ft pull-type brush hog; small single-axle trailer; 3 pt boom pole; small air compressor; bolt bin; two space heaters; double tree; lawn roller with iron seat; multiple primitive wood window frames without glass; early rake with iron seat; steel wheels various sizes; wooden stepladders; 8' alum. ladder; various wood shelves and benches; garden hand cultivator with single wheel; stone mill grinding stone

HOUSEHOLD, COLLECTIBLES, MISC

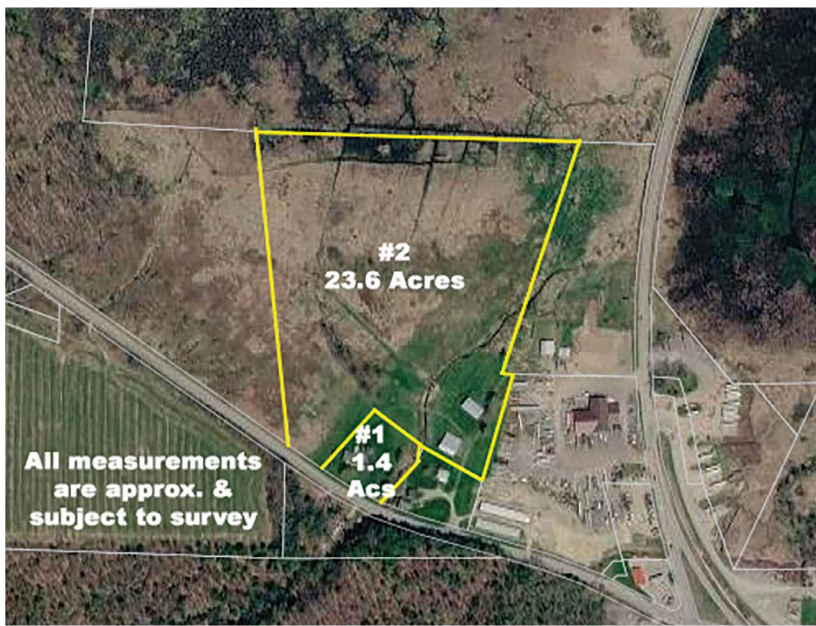
Early Mat Gott Cola display rack; picnic table; metal ped. table with four chairs; stencil painted bench; deacon's bench; several early crates and wood shutters; cut stone trough; Queen-size bed with mat. dresser and mirror; coffee table; misc. Christmas décor; round milling stone; early bank teller's cage/counter from William McKinley estate; 2 porch rugs; plank-bottom chairs; wood clothes folding drying rack; metal tubs; tilt back/swivel rocking chair; rollaway couch; small painted blue side stand; old pictures; misc. crocks various sizes; 1883 farmhouse front door; multiple storage racks; older gas stove; file cabinet; portable wooden island with several doors; wooden folding chairs; oak large plant table; steel shelving; various kitchen smalls; 5-in-1 grinder; canning jars; large cooking kettle; 5 & 10 gal milk cans; cream can; bird cage; green 4-H small tack box; hand-painted saw

TERMS ON CHATTELS

Driver's license or State ID required to register for bidder number. Cash, Check, Debit Card, Visa, or Master Card accepted. 4% buyer's premium on all sales; 4% waived for cash or check when paid sale day. Information is believed to be accurate but not guaranteed. Multi Par auction process may be used.

AUCTION BY ORDER OF

Don & Linda Anthony



RUDY W. KIKO
AUCTIONEER/REALTOR
330-540-2416
rudykiko@kikocompany.com
RS322138 & AU005639.
Russ Kiko Assoc. #AY000170L.



REALTORS
AUCTIONEERS
ADVISORS

Information is believed to be
accurate but not guaranteed.
KIKO Auctioneers

